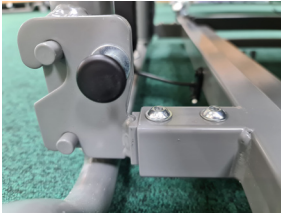


WOBURN ULTRA-LOW BED WITH AUTO REGRESSION



Product Code:	HLB799.03AR
Description:	<p>A fully functioning four- section Ultra-Low profiling bed. Platform can be lowered to 67mm off the floor for patient safety. Electronically setting of height, back rest or knee brake is simple, using the lockable handset.</p> <p>The Woburn Ultra-Low has a Trendelenburg function as standard. Optional bed levels, lighting and accessories available</p>
Max Patient Weight:	175kg (27 Stone)
Safe Working Load:	185kg (29 Stone)
Overall Dimension:	2130 x 900mm
Adjustable Platform Height:	67mm -640mm
Mattress Dimensions:	2000 x 900mm
Angle of Back Rest:	Up to 70 degrees
Angle of Knee Brake	Up to 30 degrees
Bed Weight:	81 kg
Key Information:	<ul style="list-style-type: none"> • Low voltage (29v) • Lockable handset • Emergency battery backup • Wooden head and foot boards • In-built auto-regression • Trendelenburg as standard • Electric backrest and kneebreak with mechanical lower leg support • Easy Cleaning - complies to MHRA guidelines • Compatible with environmental control system • Comes with a 5-year warranty

The latest version of our Ultra Low profiling bed has a faster build time and increased platform connection security. The platform is connected to the lift systems by simple, robust pull pins that can be operated by hand and click securely into place. These are in place on delivery. The actuator cable guide roller has changed to allow the faster build. The cable roller arrives fitted to actuator cable and only needs a pin pushing through the frame and locking with a clip.



Lift systems are released by the pull pin. All connectors in place on delivery



Cable roller arrives fitted to actuator cable and only needs a pin pushing through the frame and locking with a clip.

For more information please call your Business Development Manager, or contact our helpful Customer Service team.

Supplier Contact Details:

t: +44(0)1709 377172

e: enquiries@harvesthealthcare.co.uk

w: www.harvesthealthcare.co.uk

Sheaf house, Bradmarsh Way, Bradmarsh Business Park, Rotherham UK, S60

Important Safety Notice

< Ufj Ygh< YUfVWfY @fX gi ddYgYeI Jda YbhUbX UddJubWfG hc Wcj YfUfub[Y cZa YXWU VebXJhcbg" GdYVWZMWKcMf cZYeI Jda Ybhig h.Y gc Y fYgdcbgM]]hmcZh.Y WbJWU dfUWfjcbYf cf WUfYf cJ YfgYfYb[JbXJ Xi U dUfYbhWUfY" Rig_ UggYgga Ybtg gdYVWZMhc i gYfa i ghVY WUffYX ci hdfcfhc h.Y i gY cZU" dfcXi WfY" PfcXi WfY UbX XUfU Vebfbi U mi bXYf[c XYj Y cda YbhUbX a Umh.YfYz:fy XYj JUY Zca h.Y XYfUJg [] Yb"

Version 3: July 2020