

# ROTATIONAL MATTRESS SYSTEM



**Product Code:**

HR800

**Description:**

- The Rotational Active Mattress is a high-quality, replacement active mattress system which offers three-in-one therapy for the effective prevention of pressure ulcers.
- Designed to assist with pulmonary complications and treatment of existing pressure ulcers, the mattress is suitable for patients in need of regular re-positional changes where this cannot be achieved by the patient or carers.
- During lateral turning therapy, the carer can achieve easier repositioning with support from the mattress. The mattress helps facilitate postural drainage, especially for immobile patients.
- The continuous low-pressure therapy can provide body immersion for optimal comfort as a larger skin area will be supported by lower air pressure.
- This active mattress can significantly lower the risk of pressure ulcers while helping carers facilitate repositioning with this automatic system.
- Full training on use is provided by the team at Harvest and this system is compatible with the Harvest profiling beds.

**Mattress Dimensions:**

2000 x 900 x 250mm

**Weight:**

11.4kg

**Pump Dimensions:**

341 x 165 x 260mm

**Weight:**

4.5kg

**Max. Patient Weight:**

180kg (28 stone)

**Pressure Relief Risk:**

High to Very High

**Pump Technical Specification:**

**Voltage:**

AC 230v 50Hz

**Pressure Range:**

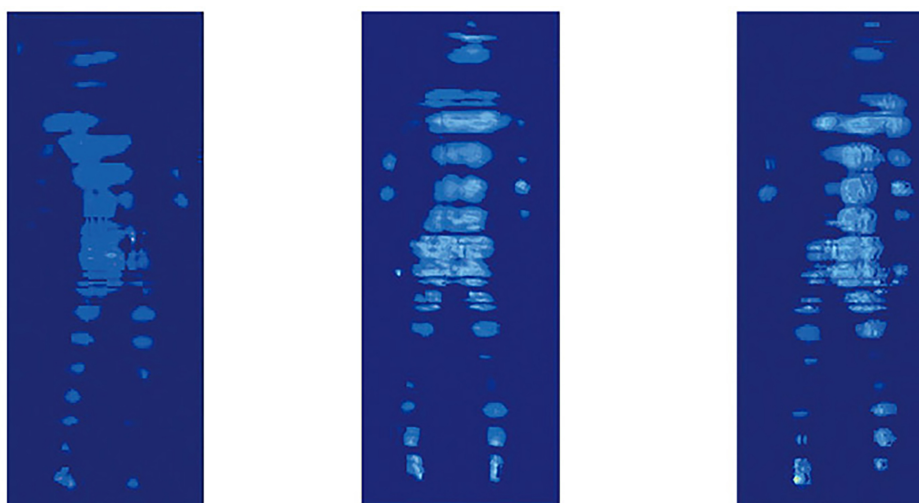
Adjustable soft -firm

**Variable Cycle Time:**

10,15, 20, 25 minutes

**Key Features and Benefits:**

- Up to 30° of bilateral turning therapy to assist patient repositioning and enhance pressure relief
- Offering extra support in sacral area when in and during sitting position
- Fast inflation time & electronic pressure control
- Heel pressure relief function
- Improving circulation & skin reperfusion
- Lockout to avoid unauthorised changes to settings
- Low pressure / power failure visual and audible alarms
- CPR quick release facility
- Complete with low friction and sheer vapour permeable high flame retardant water resistant cover
- Transport mode
- Cable management for a safe operational environment
- Suitable for fully profiling beds

**Pressure Mapping of 30° bilateral turning (weight 75kg)****Cleaning Guidance:**

Cover should be wiped down with hot water and mild detergent.

If heavily soiled, the cover may be machine washed up to 65°C and tumble dried. For disinfection use sodium hypochlorite solution max 1000ppm. Use no bleach, biological or phenolic-based cleaners. Dry completely before storing.

**Warranty**

In terms of Harvest Healthcare Guarantee and Warranties the Rotational mattress is guaranteed for three years from date of purchase.

**Exclusions:**

1. Removable covers are guaranteed for one year
2. Damage to fabric covers through incorrect use and penetration by sharp instruments is excluded
3. Components of pumps which are recommended for annual service, are guaranteed for one year.

**Supplier Contact Details:**

t: +44(0)1709 377172 e: [enquiries@harvesthealthcare.co.uk](mailto:enquiries@harvesthealthcare.co.uk) w: [www.harvesthealthcare.co.uk](http://www.harvesthealthcare.co.uk)  
Sheaf house, Bradmarsh Way, Bradmarsh Business Park, Rotherham UK, S60

**Important Safety Notice**

Harvest Healthcare Ltd supplies equipment and appliances to cover a range of medical conditions. Specific choice of equipment is the sole responsibility of the clinical practitioner or carer overseeing individual patient care. Harvest Healthcare Ltd supplies a range of products such as foam mattresses, active air mattresses, fall protection mats and bed rail protection bumpers. These products are usually covered in vapour permeable PU fabric that could cause risk of suffocation in the event of prolonged facial contact.  
(Mattress risk categories are to be used as a guide only)

Risk assessments specific to user must be carried out prior to the use of all products. Products and data continually undergo development and may therefore deviate from the details given.

Version 1: February 2022