



General User/Safety Guide

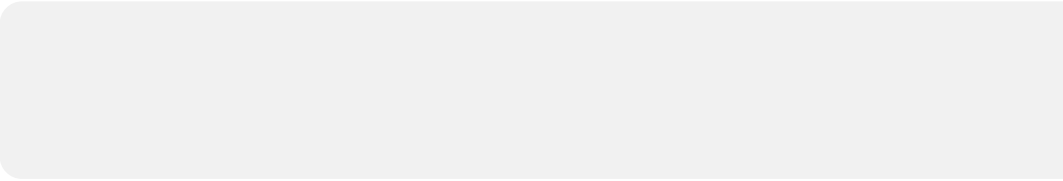
WRAPOVER BUMPER & EXTENSION PIECES

BUMPERS



www.harvesthealthcare.co.uk

CE
UK
CA



CONTENTS

WARNINGS & CAUTIONS	4
PRODUCT OVERVIEW	5
GENERAL INFORMATION	6-7
INSTALLATION	8-10
CLEANING AND CARE	11

WARNINGS & CAUTIONS



READ THIS INSTRUCTION MANUAL CAREFULLY. PLEASE NOTE IN PARTICULAR THAT THE SAFETY INSTRUCTIONS MUST BE OBSERVED.



WARNING

Please ensure that this booklet is read prior to first use.

Please refer to the information in this booklet as a guideline only.

Harvest Healthcare Ltd recommend that prior to using this product, a full risk assessment must be completed by a qualified professional, in order to determine that the correct product is suitable for each individual.

Do not allow sharp objects to penetrate the side rail covering material.

Ensure this product is fitted as specified in the fitting instructions.

Routinely inspect this item for damage and ensure all fixing straps or Hook and Loop are securely fastened.

Remove the item from service if the product is damaged or ripped.

Remove the item if the fixing straps or the Hook and Loop show signs of wear and they are not effective.

Do not expose this product to open flames. We advise the user not smoke when using this product.

Facial contact with the cover may cause suffocation if used incorrectly.

SYMBOLS USED



COVERS ARE
REMOVABLE AND
MACHINE WASHABLE



LOW HEAT
TUMBLE DRY



DO NOT
DRY CLEAN



DO NOT
BLEACH



DO NOT IRON



CE MARK



UKCA MARK



DO NOT USE
PHENOLS



NO
SMOKING



This symbol indicates general hazards. There is a danger to life and health.

PRODUCT OVERVIEW

PRODUCT DESCRIPTION

Wrapover Bumper & Extension Pieces

The Wrapover Bumper is used to surround the bed side rails, providing a safe and cushioned barrier for patients. Designed with users in mind who are inclined to roll whilst in bed, meaning extra protection may be necessary.

The three quarter length bumper wraps over the side rails and secures with Hook and Loop at the bottom, ensuring ease of use.

All the bumpers come with covers that are removable and machine washable, for better infection control.

The Wrapover Bumper is a three quarters length bumper which has an optional height extension piece for extended height or three bar rails, and an optional length extension piece for residents who need full length coverage of the rails rather than three quarters.

This mix-and-match allows the wrapover bumper to be tailored to the needs of the end user and the bed set-up.

Product Code	Description
HCSWRAP113	Harvest Wrapover Bumper Standard
HCSWRAP113 + HCSWRAP113.EX20HEIGHT	Harvest Wrapover Bumper Standard & Height Extension (200mm)
HCSWRAP113 + HCSWRAP113.EX50	Harvest Wrapover Bumper Standard & Length Extension (500mm)
HCSWRAP113.EX50 + HCSWRAP113.EX50HEIGHT	Extended Length Piece & Height Extension (200mm)



GENERAL INFORMATION

INSTRUCTIONS FOR USE

Check the product for damage, and if it is the correct type of product for the bed, before carrying out the installation.

- If a bumper netting or any other part of the product looks damaged do not fit the bumper.
- Refer to the product codes and images to see the fitted product.
- Before installing this product read the instruction for use thoroughly and seek advice if you are unsure how to fit the product.

To help prevent injury it is important that patients and equipment are monitored regularly.

The Wrapover bumper may be delivered in a plastic cover for protection; these covers must be removed and disposed of before the equipment can be used.

Please dispose of the plastic as specified by your local waste disposal service authority.

INTENDED PURPOSE

The Wrapover bumper is used to surround the bed side rails, providing a safe and cushioned barrier for patients. Designed with users in mind who are inclined to roll whilst in bed, meaning extra protection may be necessary.

WRAPOVER BUMPER INSPECTION RECOMMENDATIONS

The Wrapover bumper should be checked regularly to ensure it remains 'fit for purpose', effective and poses no risk of infection to either the patient or the carer.

Harvest Healthcare Ltd recommend that a thorough inspection of both the exterior (cover) zips, straps and Hook and Loop is carried out weekly, or each time a new patient is introduced to this equipment. Visual checks should be carried out daily to identify any significant signs of damage or infection risk.

If any signs of contamination are identified, the bumper system should be withdrawn from use immediately and cleaned.

CLEANING AND CARE

The bumper system has a protective PU cover. The cover should be cleaned regularly in accordance with your organisation's disinfection protocol. (See page 10)



Facial contact with any covering material such as that used on this product can cause suffocation and a Risk Assessment should be carried out prior to the use of this product.

GENERAL INFORMATION

MOVING, HANDLING AND STORAGE

Where possible, the bumper system should be stored flat to prevent damage to the product. It may require more than one person to aid in fitting the system.

The bumper system is to be stored between -5 to +40 degrees, in a dry environment.

Do not expose to high humidity or heat.

Do not drag or pull the bumper system by the cover.

SAFE USE

This product is intended as an aid to prevent accidental injury. With a carer present check the material, zips and fastenings to ensure that these parts of the bumper systems have not been damaged and do not introduce gaps too or a hazard that could be increased the risk of entrapment suffocation or injury to the end user or carer.

Before and during use of the bumper system, consider the effectiveness of the system, including if the side rails has been fitted correctly, and the side rails can be raised and lowered according to the manufacturers instructions. The hazard of entrapment can still occur if the side rail system has not been fitted correctly or the wrong type has been fitted.

Seek advice to ensure the correct type is selected before installation as per the manufactures instructions.

IMPORTANT NOTICE

The bumper must be able to be removed or lowered in case the user requires urgent medical attention or CPR.

Do not leave a bumper in place if the side rails can not be removed or lowered as described in the manufacturers instructions.

Do not sit on the side rails with the bumper on as this will deform the product and could cause the side rail system to malfunction

WARRANTY

BUMPER SYSTEMS

All Harvest Healthcare bumper systems are covered by warranty for a period of 1 year.

Damage through incorrect use will invalidate this warranty.

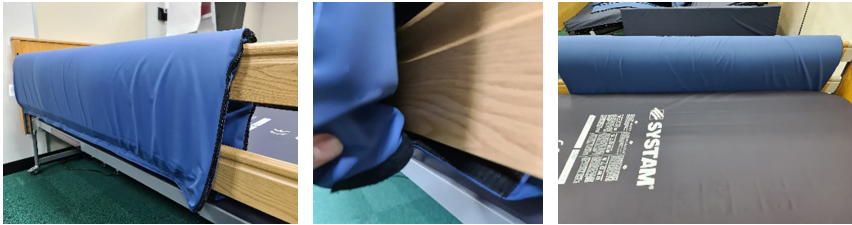
GUARANTEE

Harvest Healthcare Ltd guarantees to repair or replace all goods issued to its customers which are found to be defective whilst still under their applicable warranty period. All warranties are subject to our standard terms and conditions of sale which can be found on our website or by request to Harvest Healthcare Ltd.

INSTALLATION

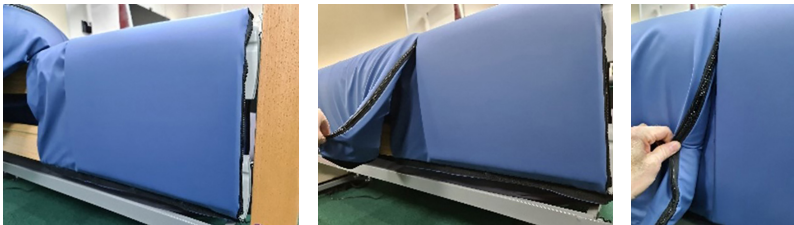
1. HCSWRAP113 - The three quarters bumper

- Wrap the bumper over the side rails towards the head end of the bed and secure by joining the Hook and Loop sections at the bottom of the bumper.



2. HCSWRAP113.EX50 - The length extension piece (used to increase the length of the HCSWRAP113; the three quarters bumper)

- Wrap the length extension piece over the foot end with the padded end towards the foot end of the bed.
- Ensure the Hook and Loop on the bottom outer edge of the length extension piece matches the inner Hook and Loop (hook to loop) on the three quarters bumper as the three quarters bumper will connect over the top of the non-padded section of the length extension piece.
- If the Hook and Loop doesn't match the three quarters bumper you can take of the length extension piece and reverse it so the previous section that was inside is now outside.



- The three quarters bumper will lay over the non padded section of the length extension piece and should provide continuous bumper protection for the full side rail system.

INSTALLATION

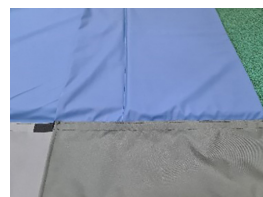
3. HCSWRAP113.EX20HEIGHT - The height extension piece for the three quarters bumper (used to increase the height of the HCSWRAP113; the three quarters bumper)

- Lay the Wrapover bumper (HCSWRAP113) on a flat surface and attach the Hook and Loop on the bumper to the Hook and Loop on the height extension piece (HCSWRAP113.EX20HEIGHT).
- Wrap the bumper over the side rails ensuring the non-padded (grey extension) is on the outside of the side rails.



4. HCSWRAP113.EX50HEIGHT - The height extension piece for the length extension piece (when combined with all bumpers above gives a full length and extra high bumper)

- Connect the bumpers as in the picture below, ensure the HCSWRAP113.EX50 lays on top of the HCSWRAP113.EX20HEIGHT, the Hook and Loop section highlighted below should match the Hook and Loop section on the HCSWRAP113.EX50.

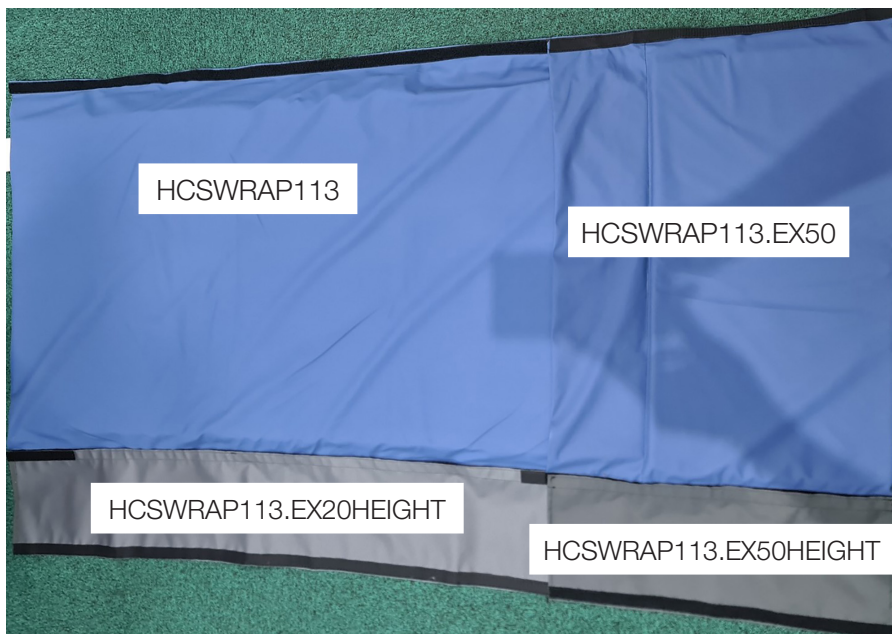


- Lay the HCSWRAP113.EX50HEIGHT on the bumpers ensuring all the Hook and Loop sections match, if they don't flip the bumper extension over.



INSTALLATION

The fully assembled system should look like the image below:



- Once assembled lay the system over the side rails with the padded sections to the inside of the bed.
- Join the Hook and Loop sections at bottom edge to secure.

CLEANING & CARE



WARNING

Eye protection, gloves, and protective clothing should be worn when carrying out cleaning and disinfection procedures.

When disinfecting the system, Harvest Healthcare recommends the following guidelines which have been developed to comply with recognised infection control procedures.

These procedures are also to be used to prevent cross infection when transferring the system between patients.

BUMPER COVER

During general use, the bumper cover can be cleaned by wiping with a mild detergent solution.

Where necessary the cover can be laundered or wiped clean. Where there is staining or body fluids on the outer cover, wash thoroughly with soap and water, then wipe with a sodium hypochlorite solution diluted to 1000ppm before laundering. Bumper covers may be laundered if the foam can be removed.

INSTRUCTIONS ON HOW TO LAUNDER THE OUTER COVER

Lay the bumper cover down on a flat surface and unzip the pocket to gain access to the internal foam padding. Remove the foam padding. The bumper can now be laundered.

1 Pre wash cold 10 minutes

2 Main wash 80°C 10 minutes

3 Followed by cold rinses and extraction.

Do not use abrasive cleaners, phenol disinfectants, solvents, or alcohol-based cleansers, e.g. Dettol, Phenicol, Hibiscrub, Clearsol, Stericol, Hycoline, as these will damage the cover materials.

Tumble dry at low heat.

Do not iron.

Ensure that the cover is thoroughly dried before inserting the foam and placing the bumper into storage.



HYPERCARBONATE AND PHENOL-BASED SOLUTIONS SHOULD NOT BE USED AS THESE WILL DAMAGE THE PRODUCT COVER

DISPOSAL

If contaminated, please dispose of as clinical waste.

If not contaminated dispose of as household waste at your local approved facility.

Note:

- Remove the foam before decontamination.
- Harvest Healthcare recommends using a wash bag to protect the system if decontaminating in a washing machine.
- Carry out a risk assessment to ensure the bumper is suitable for the users' requirements.
- In the event of the bumper system becoming damaged discontinue use immediately and contact Harvest Healthcare for advice.
- If you have any questions, please contact Harvest Healthcare before use.



harvesthealthcare®
a prismhealthcare company

Sheaf House, Bradmarsh Business Park,
Bradmarsh Way, Rotherham S60 1BW

T +44 (0)1709 377172

F +44 (0)1709 377173

E sales@harvesthealthcare.co.uk

www.harvesthealthcare.co.uk