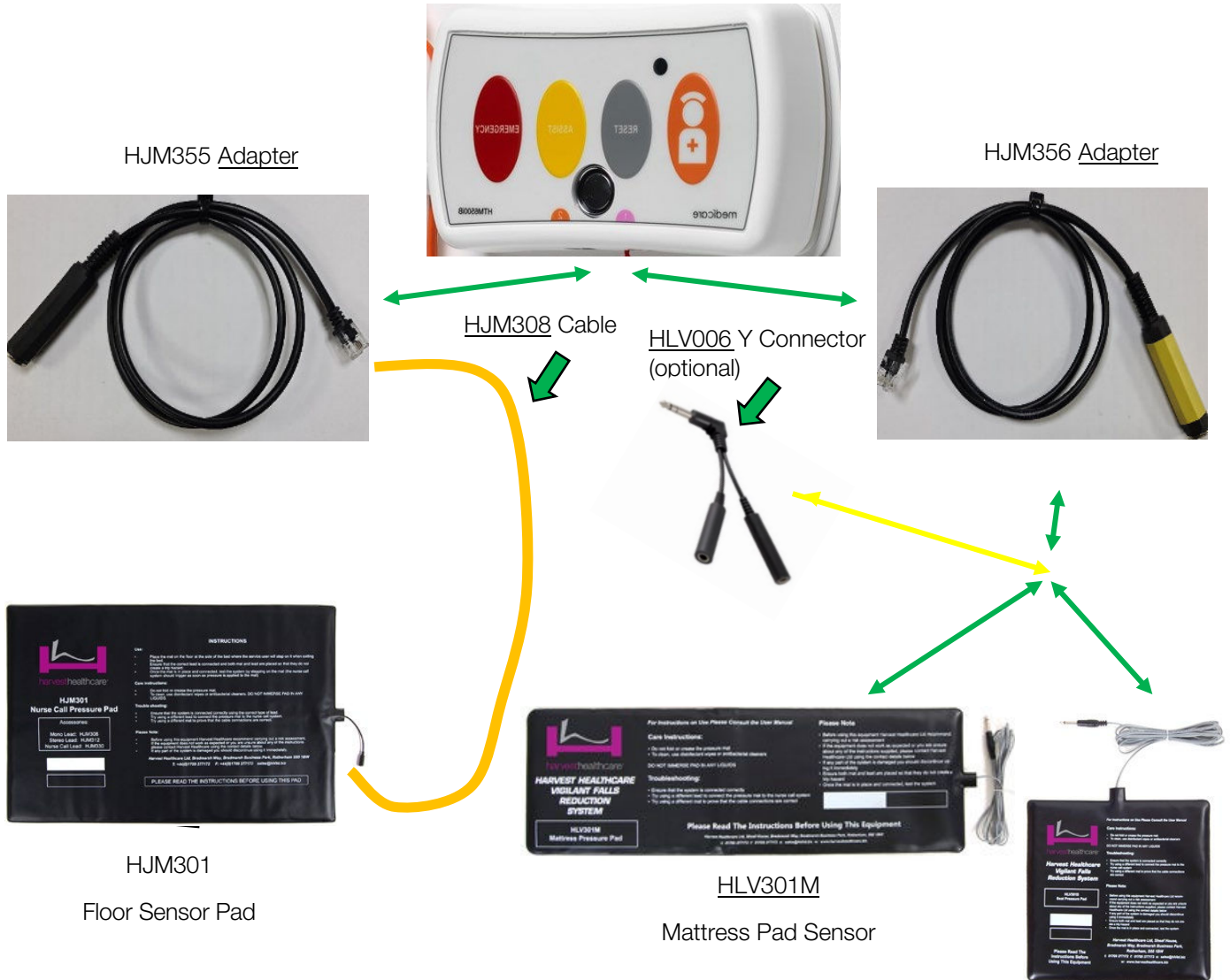


Medicare Nurse Call System Connections



To Use with Floor Sensor

1. Connect a HJM355 adapter into the nurse call system.
2. Connect one end of a HJM308 cable into the HJM355 and the other end into the HJM301 floor sensor.

To Use with Mattress or Seat Sensor

1. Connect a HJM356 adapter into the nurse call system (note the yellow colour on the plug).
2. Plug either the HLV301M or the HLV301S sensor mats into the HJM356 adapter.
3. You can use HLV006 Y connector to connect a seat and mattress sensor to the same HJM356 adapter.
4. If the chair is located away from the bed, you can use a HLV006E 6-meter extension cable.

- Carry out a risk assessment to ensure this system is suitable for intended use and test system for correct operation each time before use.
- If using a seat pad and mattress pad only one can be in use at any time.
- Read the HJR075 alarm system instructions carefully.
- If you have any doubts about the above, please contact Harvest Healthcare Ltd.

Stereo Jack-Plug

A stereo jack plug can be identified by the 2 black insulation bands.



Mono Jack-Plug

A mono jack plug can be identified by the single black insulation band.

HJRM355 ADAPTER

Used to connect the floor mat to the nurse call system



HJM356 ADAPTER

Used to connect the seat or mattress sensors to the system.



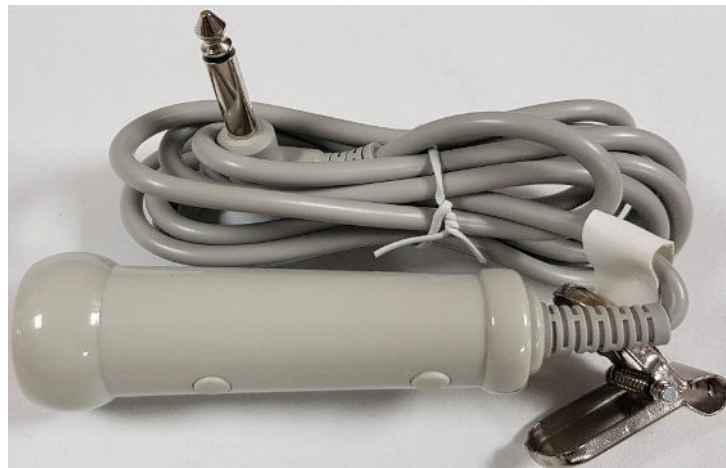
HJM308 CABLE

6.35 mono jack-plug with 3.5mm mono jack-plug. Used to connect floor mat to HJM355 adapter.



HJM330.M

6.35MM mono jack-plug with to nurse call button.



HLV006 Y Connector

6.35mm stereo jack-plug to 2 x 6.35mm sockets.

Used to connect either mat and nurse call button to nurse call system.
Or seat and mattress sensors to nurse call system.

