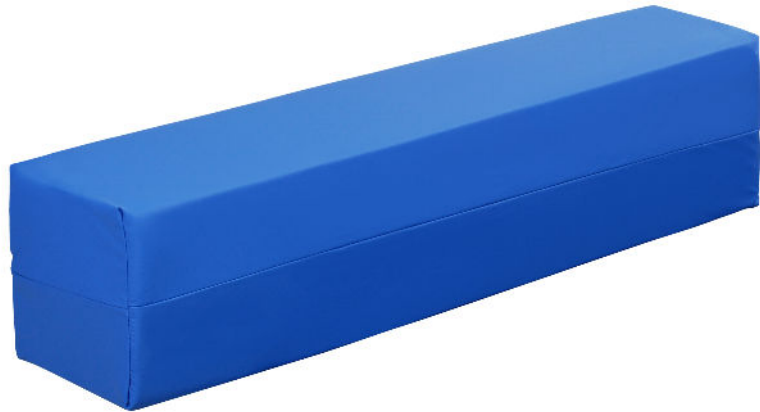


STATIC MATTRESS LENGTH EXTENSION INFILL



**Product Code
and Dimensions:**

HFIM1515: 900 x 150 x 150mm
HFIM2013: 900 x 200 x 130mm
HFIM2016: 900 x 200 x 160mm
HFIM2016S: 900 x 200 x 160mm; Fits to the bed with a Hook and Loop strap
HFIM2020: 900 x 200 x 200mm
HFIM2016.12: 1200 x 200 x 160mm
HFIM2016.12S: 1200 x 200 x 160mm; Fits to the bed with a Hook and Loop strap
HFIM2016.14: 1400 x 200 x 160mm

Description:

- Foam inserts extend the mattress by 200mm
- Supplied with a vapour permeable waterproof cover
- Used in conjunction with the bed extensions
- Available in 1200mm and 1400mm widths which make it suitable for our Woburn Ultimate 1200 and 1400 profiling beds.

Warranty:

In terms of Harvest Healthcare Guarantee and Warranties the Static Mattress Length Extension Infill is guaranteed for one year from date of purchase.

Exclusions:

1. Removable covers are guaranteed for one year
2. Damage to fabric covers through incorrect use and penetration by sharp instruments is excluded

Supplier Contact Details:

t: +44(0)1709 377172 e: enquiries@harvesthealthcare.co.uk; w: www.harvesthealthcare.co.uk
Sheaf house, Bradmarsh Way, Bradmarsh Business Park, Rotherham UK, S60 1BW

Important Safety Notice

Harvest Healthcare Ltd supplies equipment and appliances to cover a range of medical conditions. Specific choice of equipment is the sole responsibility of the clinical practitioner or carer overseeing individual patient care. Risk assessments specific to user must be carried out prior to the use of all products. Products and data continually undergo development and may therefore deviate from the details given.

Version 2: Nov 2017