



General User/ Safety Guide

# GRAB HANDLE

FALL REDUCTION



[www.harvesthealthcare.co.uk](http://www.harvesthealthcare.co.uk)

# CONTENTS

<b>WARNINGS &amp; CAUTIONS</b>	<b>3</b>
<b>OVERVIEW - GRAB HANDLE</b>	<b>4</b>
<b>OVERVIEW ULTIMATE GRAB HANDLE</b>	<b>5</b>
<b>FITTING THE GRAB HANDLE TO A WOBURN BED</b>	<b>6-7</b>
<b>FITTING THE GRAB HANDLE TO A NON-WOBURN BED</b>	<b>8-9</b>
<b>FITTING THE ULTIMATE GRAB HANDLE</b>	<b>10-11</b>
<b>SPARE PARTS LIST BACK PAGE</b>	<b>BACK COVER</b>

# WARNINGS & CAUTIONS



**READ THIS INSTRUCTION MANUAL CAREFULLY.**



**PLEASE NOTE IN PARTICULAR THAT THE SAFETY INSTRUCTIONS MUST BE OBSERVED.**



## **WARNING**

The grab handle should either be positioned less than 60mm from the headboard or more than 318mm from the headboard. **Failure to fit the grab handle in the correct position may cause a risk of entrapment.**

If the grab handle is used on a bed with integral side rails beware of a potential pinch point between the grab handle and side rails.

The grab handle and its fixings must be checked for any defects after each use and once again before each new installation, once installed the fixings should be checked for security at regular intervals.

It is important that an individual risk assessment is performed for each user on a case-by-case basis. This is required to assess both the suitability of the grab handle for a particular client and the compatibility between the grab handle and the bed it is being fitted to.



## **CAUTION**

Ensure the grab handle is suitable for the bed it is being fitted to.

Ensure the grab handle is located in the correct position. Ensure the securing clamps are tight and are checked at regular intervals. Do not allow the grab handle to cause an increased risk to the patient.

The grab handle may be supplied with an Allen key instead of a clamping lever to tighten the grab handle to the bed frame

It is important that an individual risk assessment is performed for each user on a case-by-case basis. This is required to assess both the suitability of the grab handle for a particular client and the compatibility between the grab handle and the bed it is being fitted to.

Care must be taken with rising backrests, as the gap between the two components could become less than 25mm in certain situations.

If the bed has removable mattress guides, it is recommended to remove the ones closest to the grab handle to prevent any collision between the grab handle and mattress guides

The grab handle and all components should be stored in a warm dry environment when not in use

If you have any doubt about the suitability or fitting of the grab handle, contact Harvest Healthcare Ltd.

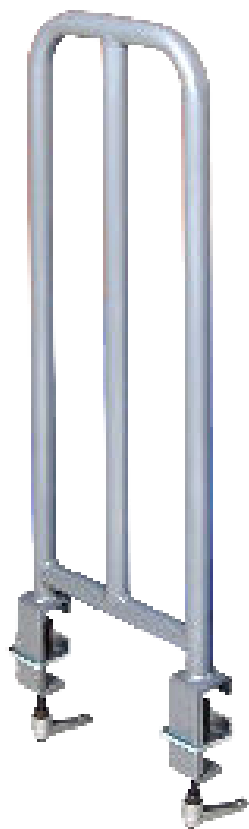
# OVERVIEW GRAB HANDLE



**ON DELIVERY AND BEFORE INSTALLATION CHECK THAT THE PACKAGING IS UNDAMAGED. REPORT ANY VISIBLE DAMAGE TO THE TRANSPORT COMPANY IMMEDIATELY.**

## HLB685 - GRAB HANDLE

Weight	<b>3.7kg</b>
Height from platform	<b>610mm (24")</b>
Clearance required under bed	<b>Approx 140mm (5.5")</b>
Width	<b>240mm (9.5")</b>
Safe Working Load	<b>100kg</b>



Removable Spacer  
(HLB692)

Clamping Bracket  
(HLB689)

Clamp Lever  
(HLB688)

**(For all part codes, see back cover.)**

# OVERVIEW

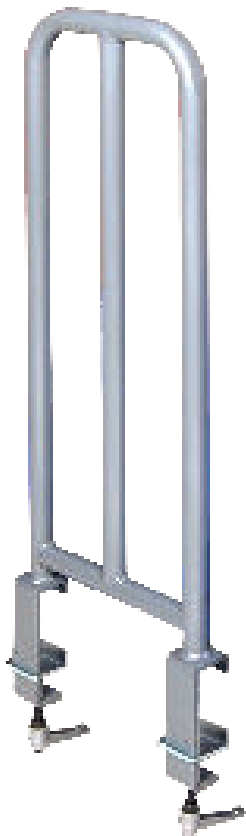
# ULTIMATE GRAB HANDLE



**ON DELIVERY AND BEFORE INSTALLATION CHECK THAT THE PACKAGING IS UNDAMAGED. REPORT ANY VISIBLE DAMAGE TO THE TRANSPORT COMPANY IMMEDIATELY.**

## HLB686 - ULTIMATE GRAB HANDLE

Weight	<b>3.7kg</b>
Height from top of mattress	<b>610mm (24")</b>
Clearance required under bed	<b>Approx 140mm (5.5")</b>
Width	<b>240mm (9.5")</b>
Safe Working Load	<b>120kg</b>



Clamping Bracket

Clamp Lever

**(For all part codes, see back cover.)**

# INSTALLATION GRAB HANDLE

## FITTING THE GRAB HANDLE TO THE STANDARD WOBURN BED

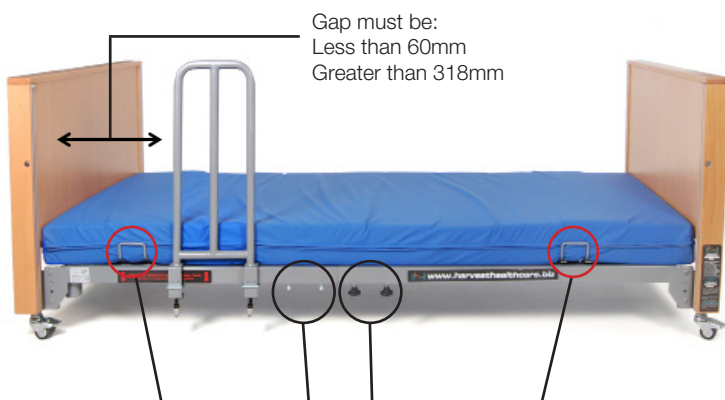
The following instructions show how to fit the **HLB685** grab handle to a **Woburn Bed only**.

**Importance notice:** The grab handle may be supplied with an Allen key instead of a clamping lever to tighten the grab handle to the bed frame.

- 1 Lock the side rails in the upper position.
- 2 Ensure that the clamping levers are loosened off and the clamping brackets are at the lowest position.
- 3 Ensure the **black spacers** are in place.



- 4 Fit the grab handle to the side of the sleeping platform (on the inside of the side rails if fitted) ensuring that it is either less than 60mm from the headboard or more than 318mm from the headboard.



**Please pay attention to the sleeping platform fixings as the grab handle will not fit over these fixings. Do not fit the grab handle adjacent to the mattress guides, if the mattress guides are removable remove the one closest to the grab handle**

# INSTALLATION GRAB HANDLE

- 5** Tighten up the clamping lever until the clamping brackets come into contact with the sleeping platform. Ensure the clamping brackets are in contact with the sleeping platform and not any of the mattress platform fixings.
- 6** Tighten the clamping levers ensuring that the grab handle is securely attached to the bed frame.
- 7** Pull the clamping levers down and turn them so the levers are safely hidden under the bed.

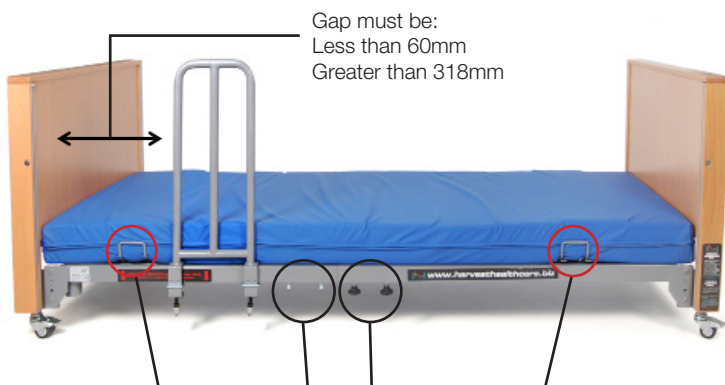


- 8** Check the grab handle is securely fixed and operate the side rails to ensure there is no conflict between the two.
- 9** Profile the bed fully to ensure there is no conflict with the moving platform sections and grab handle.
- 10** Please pay attention to the sleeping platform fixings as the grab handle will not fit over these fixings. Do not fit the grab handle adjacent to the mattress guides, if the mattress guides are removable remove the one closest to the grab handle.

# INSTALLATION GRAB HANDLE

## FITTING THE GRAB HANDLE TO A BED OTHER THAN WOBURN

- 1 Carry out a risk assessment to ensure the two products are compatible.
- 2 The black spacers can be removed to allow the grab handle to fit on beds with platform tubes larger than the Harvest Healthcare Ltd range of beds.
- 3 Lock any side rails in the upper position.
- 4 Ensure that the clamping levers are loosened off and the clamping brackets are at the lowest position.
- 5 Fit the grab handle to the side of the sleeping platform (on the inside of the side rails if fitted) ensuring that it is either less than 60mm from the headboard or more than 318mm from the headboard.



**Please pay attention to the sleeping platform fixings as the grab handle will not fit over these fixings. Do not fit the grab handle adjacent to the mattress guides, if the mattress guides are removable remove the one closest to the grab handle. if they are not removable check they will not hit the grab handle.**



# INSTALLATION GRAB HANDLE

- 6** Tighten up the clamping lever until the clamping brackets meet the sleeping platform. Ensure the clamping brackets are in contact with the sleeping platform and not any of the mattress platform fixings.
- 7** Tighten the clamping levers ensuring that the grab handle is securely attached to the bed frame.
- 8** Pull the clamping levers down and turn them so the levers are safely hidden under the bed.



- 9** Check the grab handle is securely fixed and operate the side rails to ensure there is no conflict between the two.
- 10** Profile the bed fully to ensure there is no conflict with the moving platform sections and grab handle.
- 11** The grab handle and its fixings must be checked for any defects after each use and once again before each new installation, once installed the fixings should be checked for security at regular intervals.

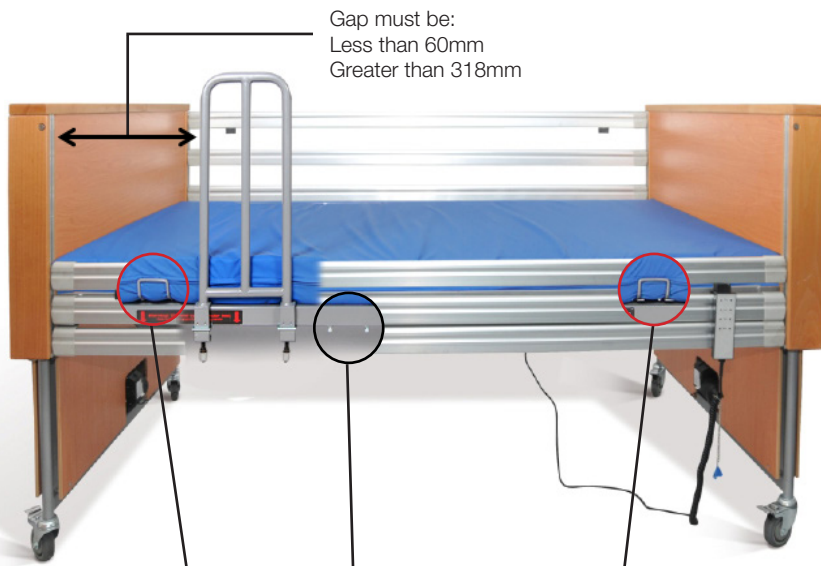
# INSTALLATION ULTIMATE GRAB HANDLE

## FITTING THE ULTIMATE GRAB HANDLE

The following instructions show how to fit the **HLB686** grab handle to a **Woburn Ultimate Bed only**.

**Importance notice:** The grab handle may be supplied with an Allen key instead of a clamping lever to tighten the grab handle to the bed frame.

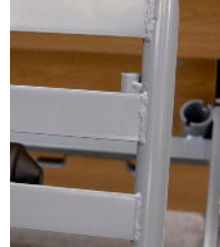
- 1 Lock any side rails in the **upper** position.
- 2 Ensure that the clamping levers are loosened off and the clamping brackets are at the lowest position.
- 3 Fit the Grab Handle to the side of the sleeping platform (on the inside of the side rails if fitted) ensuring that it is either less than 60mm from the headboard or more than 318mm from the headboard.



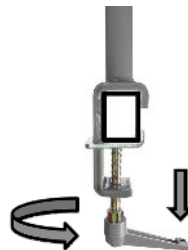
**Please pay attention to the sleeping platform fixings and the metal mattress guides as the grab handle will not fit over these fixings. Do not fit the grab handle adjacent to the mattress guides, if the mattress guides are removable remove the one closest to the grab handle, if they are not removable check they will not hit the grab handle.**

# INSTALLATION ULTIMATE GRAB HANDLE

**Do not fit the grab handle adjacent to the metal mattress guides. Remove the mattress guide closest to the grab handle. This ensures that the mattress guide will not conflict with the Grab Handle.**



- 4** Tighten up the clamping lever until the clamping brackets meet the sleeping platform. Ensure the clamping brackets are in contact with the sleeping platform and not any of the mattress platform fixings.
- 5** Tighten the clamping levers ensuring that the grab handle is securely attached to the bed frame.
- 6** Pull the clamping levers down and turn them so the levers are safely hidden under the bed.



- 7** Check the grab handle is securely fixed and operate the side rails to ensure there is no conflict between the two.
- 8** Profile the bed fully to ensure there is no conflict with the moving platform sections and grab handle.
- 9** The grab handle and its fixings must be checked for any defects after each use and once again before each new installation, once installed the fixings should be checked for security at regular intervals.

# USEFUL PARTS LIST

## GRAB HANDLES

Standard Grab Handle	<b>HLB685</b>
Ultimate Grab Handle	<b>HLB686</b>

## SPARE PARTS

Clamping Bracket (single)	<b>HLB689</b>
Clamp Lever	<b>HLB688</b>
Spacer Pad & Screws	<b>HLB692</b>
Allen Key to fit Fixing Bolt	<b>HLB691</b>

**Serial No:**

**DOCUMENT REFERENCE:** GRABHANDLE/MANUAL01 - November 2023



**harvesthealthcare®**  
a prismhealthcare company

**Harvest Healthcare Limited.** Company No: 07210261  
Sheaf House, Bradmarsh Way, Bradmarsh Business Park,  
Rotherham, S60 1BW

**T** +44 (0)1709 377 172 **F** +44 (0)1709 377 173  
**E** [sales@harvesthealthcare.co.uk](mailto:sales@harvesthealthcare.co.uk) [www.harvesthealthcare.co.uk](http://www.harvesthealthcare.co.uk)

© Copyright Harvest Healthcare  
Our Full Terms & Conditions are available by request or can be found on our Website  
Harvest Healthcare reserves the right to alter or amend this document without notice.